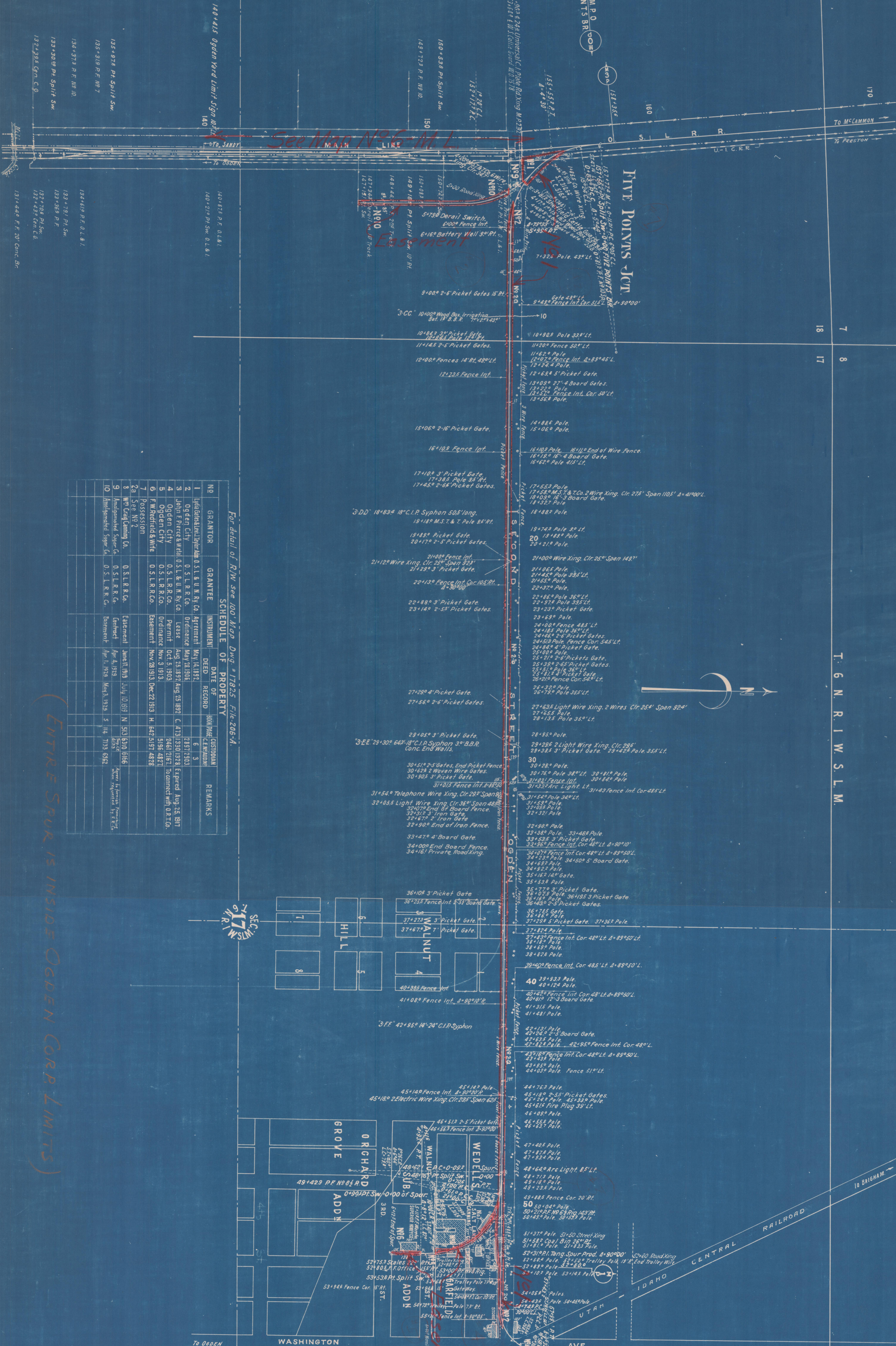


BROWNING

151.66' 519.000 M.P.D.
FIVE POINTS BR.



1404415 Ogden Road Limit Sign
1404416 P.E. O.R.B.
1404417 P.E. O.R.B.
1404418 P.E. O.R.B.
1404419 P.E. O.R.B.
1404420 P.E. O.R.B.
1404421 P.E. O.R.B.
1404422 P.E. O.R.B.
1404423 P.E. O.R.B.
1404424 P.E. O.R.B.
1404425 P.E. O.R.B.
1404426 P.E. O.R.B.
1404427 P.E. O.R.B.
1404428 P.E. O.R.B.
1404429 P.E. O.R.B.
1404430 P.E. O.R.B.

For detail of R/W see 100' Map Dwg. # 17225, File 206-A.

NO	GRANTOR	GRANTEE	INSTRUMENT	DATE OF RECORD	RECORD	REMARKS
1	Idaho State Highway Dept.	O.S.L.R.R.C.	Deed	Aug 25 1937	C 133 1330 1333	Exempt from taxation
2	Ogden City	O.S.L.R.R.C.	Deed	Aug 25 1937	C 133 1330 1333	Exempt from taxation
3	John F. Hirsch	O.S.L.R.R.C.	Lease	Aug 25 1937	C 133 1330 1333	Exempt from taxation
4	Ogden City	O.S.L.R.R.C.	Permit	Oct 4 1903	6481 6487	Permitted for a.R.C.
5	Ogden City	O.S.L.R.R.C.	Ordinance	Nov 3 1913	5196 4877	Permitted for a.R.C.
6	F. W. Hirsch & W. E. Hirsch	O.S.L.R.R.C.	Deed	Nov 29 1913	Dec 2 1913	H. 247 519 4878
7	Idaho State Highway Dept.	O.S.L.R.R.C.	Deed	Nov 29 1913	Dec 2 1913	H. 247 519 4878
8	Idaho State Highway Dept.	O.S.L.R.R.C.	Deed	Nov 29 1913	Dec 2 1913	H. 247 519 4878
9	Idaho State Highway Dept.	O.S.L.R.R.C.	Deed	Nov 29 1913	Dec 2 1913	H. 247 519 4878
10	Idaho State Highway Dept.	O.S.L.R.R.C.	Deed	Nov 29 1913	Dec 2 1913	H. 247 519 4878

ENTIRE SPUR IS INSIDE ODGEN CORP. LIMITS

T 6 N R I W S L M

WEBER COUNTY
FIVE POINTS BRANCH
MAP NO. 1